

With ColorVu, You'll Enjoy:

Images shot by ColorVu camera were with supplementary light OFF

True Color Information

- Accurate color rendering
- Excellent performance in low-light environments



Unable to identify color



Accurate color

More Details

- Clearly captured color information
- Richer details compared to black and white imaging



Lost details



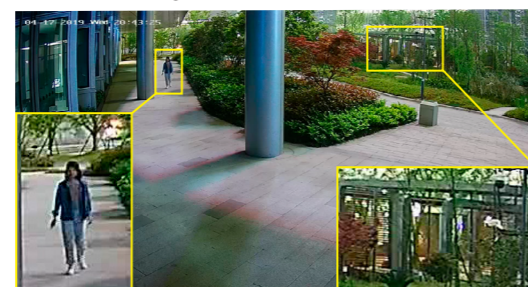
Rich color-related details

Better Visual Experience

- Balanced brightness
- F1.0 super aperture and advanced sensor guarantee realistic rendering



Blurry



Sharp

24/7 Colorful Imaging View in color, Even in darkness



Headquarters
No.555 Qianmo Road, Binjiang District,
Hangzhou 310051, China
T +86-571-8807-5998
overseasbusiness@hikvision.com



HIKVISION

www.hikvision.com

Combining Great Technologies for Greater Image Quality

F1.0 Super Aperture

Collects more light to produce brighter image.



Friendly Lighting

Soft and warm supplemental light works to guarantee colorful images when in zero-light environments.

Advanced Sensor

Vastly improves the utilization of available light.

AcuSense NVR



DS-7732NXI-I4(16P)/4S
32-Channel 4-HDD
AcuSense NVR

- Up to 32-ch IP cameras for access
- Deep learning-based behavior analysis
- 4-ch false alarm reduction
- Support quick target search
- H.265/H.265+/H.264/H.264+/MPEG4 supported decoding formats
- 256 Mbps/200 Mbps for incoming/outgoing bandwidth
- 12-ch 1080p decoding
- 2 HDMI, 1 VGA and 1 CVBS output
- eSATA by default
- Optional 16 PoE ports, with /16P model
- 1.5U chassis



DS-7716NXI-I4(16P)/4S
16-Channel 4-HDD
AcuSense NVR

- Up to 16-ch IP cameras for access
- Deep learning-based behavior analysis
- 4-ch false alarm reduction
- Support quick target search
- H.265/H.265+/H.264/H.264+/MPEG4 supported decoding formats
- 256 Mbps/200 Mbps for incoming/outgoing bandwidth
- 12-ch 1080p decoding
- 2 HDMI, 1 VGA and 1 CVBS output
- eSATA by default
- Optional 16 PoE ports, with /16P model
- 1.5U chassis



DS-7616NXI-I2(16P)/4S
16-Channel 2-HDD
AcuSense NVR

- Up to 16-ch IP cameras for access
- Deep learning-based behavior analysis
- 4-ch false alarm reduction
- Support quick target search
- H.265/H.265+/H.264/H.264+/MPEG4 supported decoding formats
- 160 Mbps/256 Mbps for incoming/outgoing bandwidth
- 12-ch 1080p decoding
- 1 HDMI, 1 VGA and 1 CVBS output
- Optional 16 PoE ports, with /16P model
- 1U chassis



DS-7608NXI-I2(8P)/4S
8-Channel 2-HDD
AcuSense NVR

- Up to 8-ch IP cameras for access
- Deep learning-based behavior analysis
- 4-ch false alarm reduction
- Support quick target search
- H.265/H.265+/H.264/H.264+/MPEG4 supported decoding formats
- 80 Mbps/256 Mbps for incoming/outgoing bandwidth
- 12-ch 1080p decoding
- 1 HDMI, 1 VGA and 1 CVBS output
- Optional 8 PoE ports, with /8P model
- 1U chassis

ColorVu Camera



DS-2CD204761-L
4 MP ColorVu Network Bullet Camera

- 4 MP resolution
- 2.8/4/6 mm fixed lens, optional
- Colorful imaging 24/7
- H.265+/H.265
- IP 67
- 120 dB WDR



DS-2CD234761-L(U)
4 MP ColorVu Network Turret Camera

- 4 MP resolution
- 2.8/4/6 mm fixed lens, optional
- Colorful imaging 24/7
- H.265+/H.265
- IP67/IP66(-U)
- 120 dB WDR
- -U: build-in microphone



DS-2CD2T4761-L
4 MP ColorVu Network Bullet Camera

- 4 MP resolution
- 2.8/4/6 mm fixed lens, optional
- Colorful imaging 24/7
- H.265+/H.265
- IP 67
- 120 dB WDR



DS-2CD202761-L
2 MP ColorVu Network Bullet Camera

- 2 MP resolution
- 2.8/4/6 mm fixed lens, optional
- Colorful imaging 24/7
- H.265+/H.265
- IP 67
- 120 dB WDR



DS-2CD232761-L(U)
2 MP ColorVu Network Turret Camera

- 2 MP resolution
- 2.8/4/6 mm fixed lens, optional
- Colorful imaging 24/7
- H.265+/H.265
- IP67/IP66(-U)
- 120 dB WDR
- -U: build-in microphone



DS-2CD2T2761-L
2 MP ColorVu Network Bullet Camera

- 2 MP resolution
- 2.8/4/6 mm fixed lens, optional
- Colorful imaging 24/7
- H.265+/H.265
- IP 67
- 120 dB WDR

NVR



DS-7732NI-I4(24P)
32-Channel 4-HDD NVR

- Up to 32-ch IP cameras for access
- H.265/H.265+/H.264/H.264+/MPEG4 supported decoding formats
- 320 Mbps/256 Mbps for incoming/outgoing bandwidth
- 16-ch 1080p decoding
- 2 HDMI, 1 VGA and 1 CVBS output
- eSATA by default
- 24 PoE ports
- 1.5U chassis



DS-7732NI-I4(16P)(B)
32-Channel 4-HDD NVR

- Up to 32-ch IP cameras for access
- H.265/H.265+/H.264/H.264+/MPEG4 supported decoding formats
- 256 Mbps/256 Mbps for incoming/outgoing bandwidth
- 16-ch 1080p decoding
- 2 HDMI, 1 VGA and 1 CVBS output
- eSATA by default
- Optional 16 PoE ports, with /16P model
- 1.5U chassis



DS-7716NI-I4(16P)(B)
16-Channel 4-HDD NVR

- Up to 16-ch IP cameras for access
- H.265/H.265+/H.264/H.264+/MPEG4 supported decoding formats
- 160 Mbps/256 Mbps for incoming/outgoing bandwidth
- 16-ch 1080p decoding
- 2 HDMI, 1 VGA and 1 CVBS output
- eSATA by default
- Optional 16 PoE ports, with /16P model
- 1.5U chassis



DS-7616NI-I2(16P)
16-Channel 2-HDD NVR

- Up to 16-ch IP cameras for access
- H.265/H.265+/H.264/H.264+/MPEG4 supported decoding format
- 160 Mbps/256 Mbps for incoming/outgoing bandwidth
- 16-ch 1080p decoding
- 1 HDMI, 1 VGA and 1 CVBS output
- Optional 16 PoE ports, with /16P model
- 1U chassis



DS-7608NI-I2(8P)
8-Channel 2-HDD NVR

- Up to 8-ch IP cameras for access
- H.265/H.265+/H.264/H.264+/MPEG4 supported decoding format
- 80 Mbps/256 Mbps for incoming/outgoing bandwidth
- 16-ch 1080p decoding
- 1 HDMI, 1 VGA and 1 CVBS output
- Optional 8 PoE ports, with /8P model
- 1U chassis